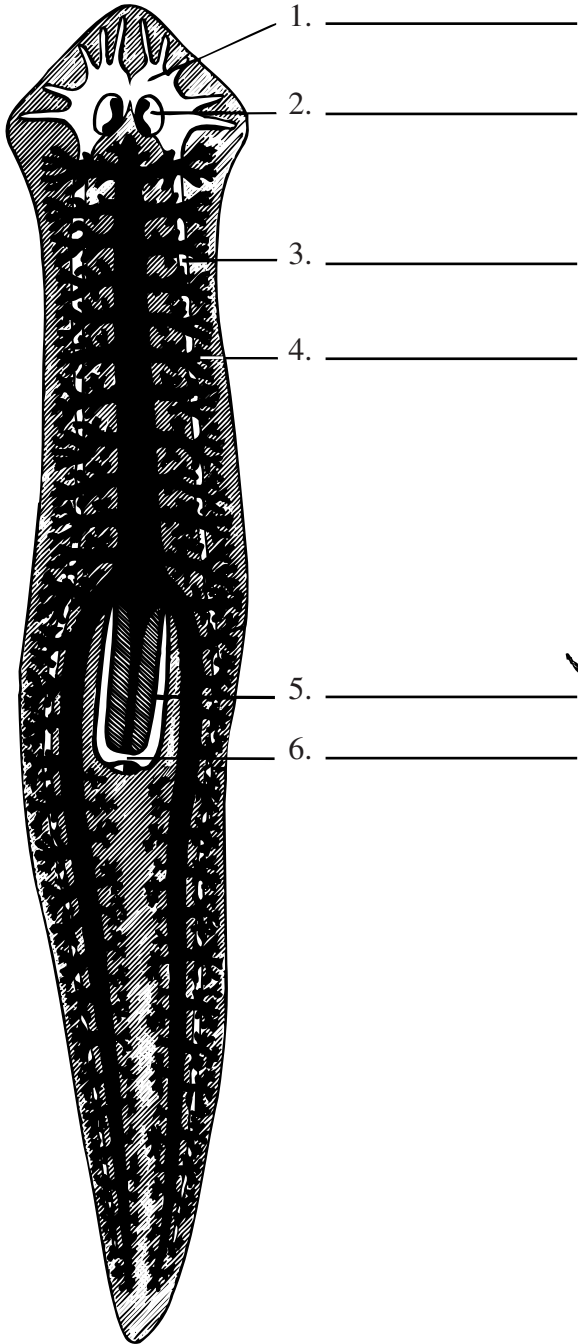


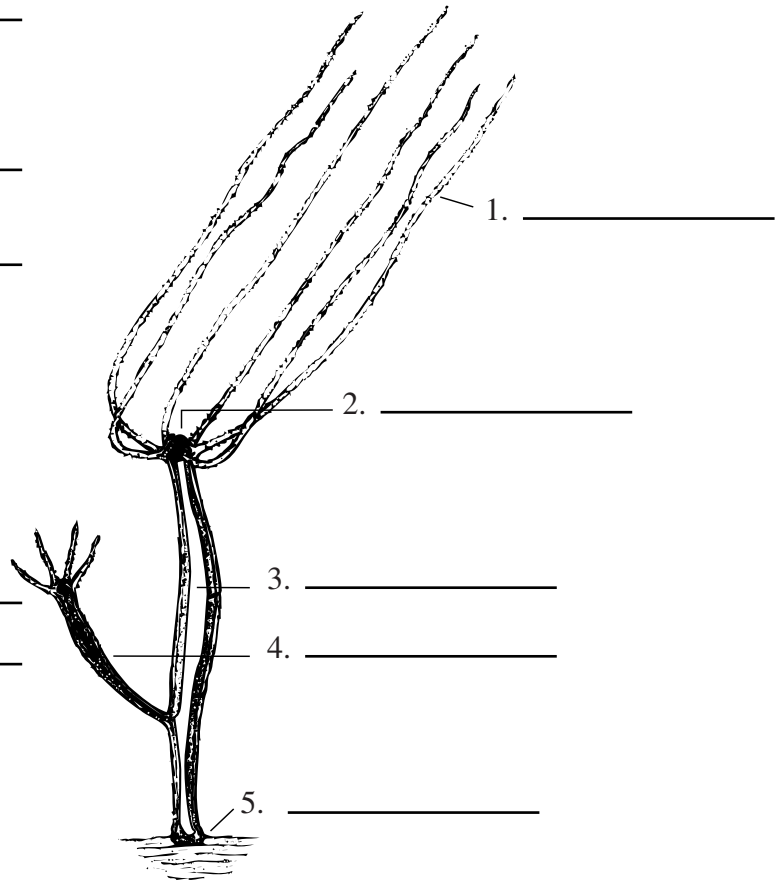
McWorm Worksheet

Pre-Lab Activity

Label the numbered parts of the planaria and hydra below.



Planaria



Hydra

McWorm Worksheet (Continued)

Feeding Planaria

Observation of planaria and *Lumbriculus* fragments (draw sketches, describe, or both)

Questions

1. What sensory cues from the worm fragment might the planaria be sensing?
2. Did the worm fragment react to the planaria? If so, describe the response.
3. How does the fragment reach the mouth of the planaria?
4. Where does the food go after entering the mouth?
5. How long did it take to ingest the *Lumbriculus* fragment?

Feeding Hydra

Observation of hydra and *Lumbriculus* fragments (draw sketches, describe, or both).

Questions

1. What might cause the *Lumbriculus* fragment to stick to the hydra tentacle?
2. What sensory cues from the worm fragment might the hydra be responding to?
3. Did the *Lumbriculus* fragment respond to the hydra? If so, describe the response.
4. Describe the appearance of hydra as it ingests the fragment.
5. Describe the appearance of the worm fragment within the hydra's digestive cavity.
6. How long did it take for the ingestion to occur?