

# McWorm: Invertebrate Fast Food Student Matching Quiz

Match the letter on the color photo with the appropriately numbered description below. Place each letter on the answer sheet below.

The crayfish detects the worm; chelipeds are open and ready to seize it. **1**

Hydra tentacle, armed with nematocysts, contacts the worm fragment; the hydra's mouth begins to open. **6**

The worm is cut into several fragments; one fragment has been transferred by the feeding appendages to the crayfish mouth. **10**

The fragment is ingested and is within the hydra's gastrovascular cavity. **2**

The worm fragment has been ingested and the pharynx is fully extended from the posterior end of the planarian (ventral view); the mouth is open. **7**

Male fish grasps the posterior end of a whole worm which attempts to swim in order to escape. **11**

The worm fragment has reached the planarian's mouth and suction begins to draw the fragment into the pharynx (dorsal view). **3**

Ventral view of tadpole shrimp (*Triops*) consuming a worm fragment. **8**

Leech uses its mouth and sucking pharynx to attack a whole worm. **12**

The posterior part of a worm has fragmented in response to predatory attack by a leech. **4**

The anterior end of planarian moves over a worm fragment which permits the planarian's ciliated ventral surface to move the fragment posteriorly toward its pharynx (dorsal view). **9**

Fragment of worm has been bitten off and is held in the mouth of a guppy. **13**

The worm fragment is almost completely drawn inside the planarian pharynx (ventral view). **5**

The hydra's mouth is stretched open and surrounds part of the worm fragment. **14**

## Student Answer Sheet:

1  2  3  4  5  6  7

8  9  10  11  12  13  14

# McWorm: Invertebrate Fast Food

## Answer Key

Legends for color plate

showing various predators

feeding on *Lumbriculus*

### Crayfish feeding:

**M.** The crayfish detects the worm; chelipeds are open and ready to seize it.

**A.** The worm is cut into several fragments; one fragment has been transferred by the feeding appendages to the crayfish mouth.

### Hydra feeding:

**K.** Hydra tentacle, armed with nematocysts, contacts the worm fragment; the hydra's mouth begins to open.

**C.** The hydra's mouth is stretched open and surrounds part of the worm fragment.

**B.** The fragment is ingested and is within the hydra's gastrovascular cavity.

### Fish feeding:

**H.** Fragment of worm has been bitten off and is held in the mouth of a guppy.

**G.** Male fish grasps the posterior end of a whole worm which attempts to swim in order to escape.

Planarian feeding:

**E.** The anterior end of planarian moves over a worm fragment which permits the planarian's ciliated ventral surface to move the fragment posteriorly toward its pharynx (dorsal view).

**J.** The worm fragment has reached the planarian's mouth and suction begins to draw the fragment into the pharynx (dorsal view).

**I.** The worm fragment is almost completely drawn inside the planarian pharynx (ventral view).

**D.** The worm fragment has been ingested and the pharynx is fully extended from the posterior end of the planarian (ventral view); the mouth is open.

### Tadpole shrimp feeding:

**F.** Ventral view of tadpole shrimp (*Triops*) consuming a worm fragment.

### Leech feeding:

**N.** Leech uses its mouth and sucking pharynx to attack a whole worm.

**L.** The posterior part of a worm has fragmented in response to predatory attack by the leech.

### Key To Matching:

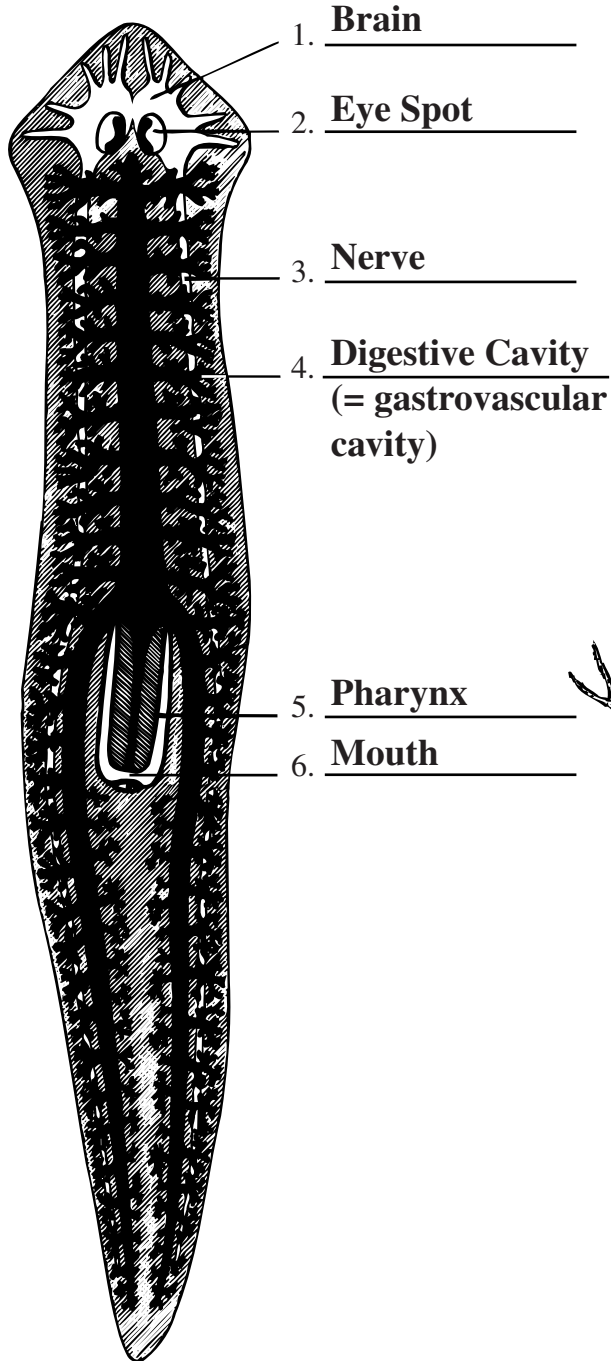
1:M 2:B 3:J 4:L 5:I 6:K 7:D  
8:F 9:E 10:A 11:G 12:N 13:H 14:C

# McWorm Worksheet

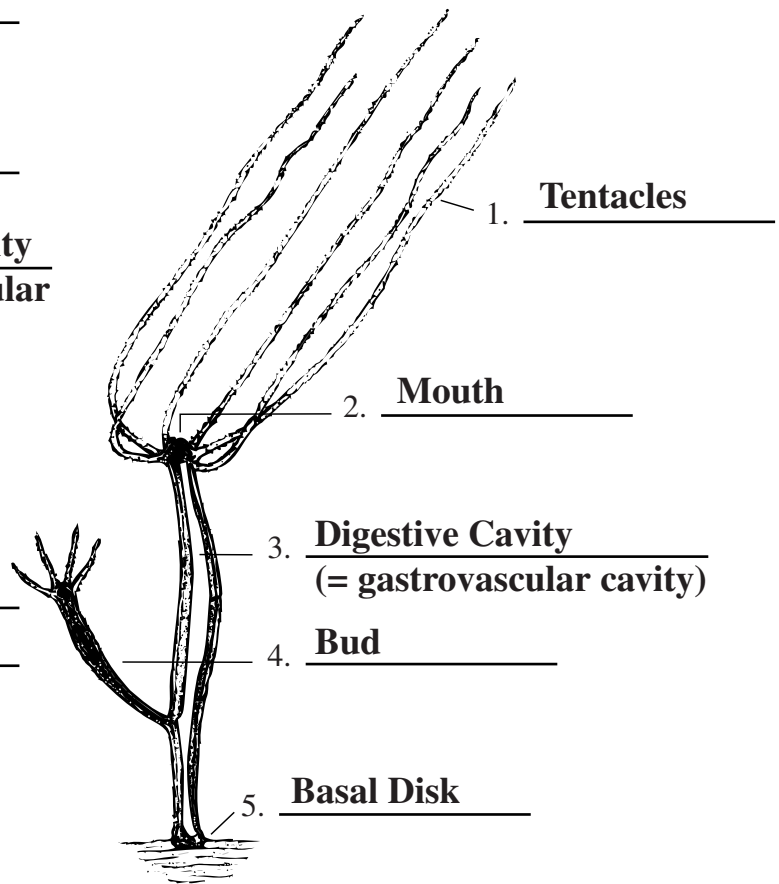
## Answer Key

### Pre-Lab Activity

Label the numbered parts of the planaria and hydra below.



Planaria



Hydra