

# Laboratory Design & Safety SPOTLIGHT

**FLINN**  
SCIENTIFIC

## Fume Hoods

See page 7



## Chemical Storage

See page 5

## Lab Furniture

See pages 2-3



## Safety Supplies

See page 6



## Lab Design Services

See page 8





# LAB FURNITURE



**Instructor Demonstration Table, 8'**  
AP6548, \$4589.40

**Specifications:**

Overall Dimensions—  
96"L x 30"D x 36"H

One Black Epoxy Resin  
Sink Dimensions—  
18"W x 15"L x 12"H

Tabletop Surface –  
1" Black Epoxy Resin

**Includes:**

- One mixing water faucet
- One 2-way gas fixture
- Support rod and crossbar
- One GFI duplex electrical receptacle
- Locks for each cupboard and drawer



**Instructor's Demo Table,  
ADA-Compliant**  
AP7889, \$5648.45

**Specifications:**

Overall Dimensions—  
72"L x 30"D x 34"H

One Black Epoxy Resin  
Sink Dimensions—  
14"W x 10"L x 6"H

Tabletop Surface –  
1" Black Epoxy Resin

**Includes:**

- One cold water  
  combo/gas fixture
- One upright rod, one rod  
  clamp, and a cross bar
- One GFI duplex electrical  
  receptacle
- Locks for each drawer

## Surface Options



Epoxy

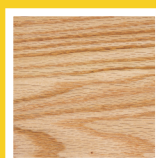


Phenolic

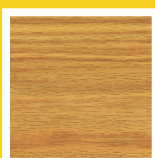


Laminate

## Wood Specie and Stain Options



Northwoods  
Oak



Golden Tan  
Oak



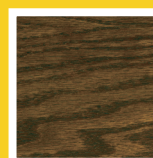
Coosa  
Oak



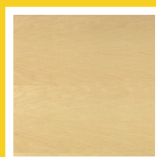
Pecan  
Oak



Rich Honey  
Oak



Deep Bronze  
Oak



Northwoods  
Maple



Golden Tan  
Maple



Coosa  
Maple



Pecan  
Maple



Rich Honey  
Maple



Deep Bronze  
Maple



# LAB FURNITURE, continued



## Island Student Lab Station

AP7883, AP7885, AP7887, \$8335.00 – \$25004.00

### Specifications:

Overall Dimensions—

Four-Student Island Lab Station – 66"L x 48"D x 36"H

One Black Epoxy Sink – 12"W x 8"D x 6"H

Tabletop Surface – 1" Black Epoxy Resin

### Includes:

- Two GFI duplex electrical receptacles
- Two cold water/gas combination fixtures
- Available with a flat top
- Locks on each drawer & cupboard

8-Student and 12-Student Island Lab Stations also available.



## 4-Student Perimeter Pier Lab Table

AP6550, \$6034.40

### Specifications:

Overall Dimensions—102"W x 36"H x 90"D

One Black Epoxy Sink – 12"W x 8"D x 6"H

Tabletop Surface – 1" Black Epoxy Resin

### Includes:

- Two cold water/gas combination fixtures
- Two GFI duplex electrical receptacles



## Flinn Combination Classroom Lab Station

AP6205, \$4337.00

### Specifications:

Overall Dimensions—96"W x 50"D x 36"H

One Black Epoxy Resin Sink – 12"L x 8"W x 6"D

Tabletop Surface – 1" Black Epoxy Resin

### Includes:

- Two GFI duplex electrical receptacles
- Two cold water/gas combination fixtures
- Available with a flat top
- Locks on each cupboard



## Student Lab Tables

Multiple size options available

\$373.30 – \$1730.00

**Top Options:** plastic laminate, chemical resistant laminate, epoxy, solid phenolic

**Height Options:** 30", 34", 36", and adjustable height

**Apron Options:** book compartment, electrical outlets, and/or plain

**Casters:** with or without

*These and many more furniture options available at [flinnsci.com](http://flinnsci.com)!*



# FREQUENTLY ASKED SAFETY AND DESIGN QUESTIONS

**Q: How many students can my lab serve?**

**A:** Lab/Classroom: 60 sq./ft. per occupant;  
Lab only: 50 sq./ft. per occupant  
(Per NFPA 101 Life Safety Code,  
Chapter 7.3.1.2. Occupant Load Factor)

**Q: Can I use a ductless fume hood?**

**A:** Ductless fume hoods are available, however, for most applications Flinn recommends using a fully ducted fume hood.

**Q: How much does a new laboratory cost?**

**A:** From various school projects we've helped out with and in discussion with architects, we have determined that a new science room costs about \$150.00 per sq. ft. For remodeling and renovation, we have been told \$80.00 per sq. ft.

**Q: I need help building a new laboratory. Can you help?**

**A:** Yes! Flinn offers free laboratory design services and has many additional resources to help you. Please call 800-452-1261 or email Flinn at [flinn@flinnsci.com](mailto:flinn@flinnsci.com) to speak with a representative.

**Q: Do I need to ventilate my flammables cabinet?**

**A:** Flinn and NFPA do not recommend venting a flammables cabinet. Local building codes may require you to ventilate, though.

**Q: Why would I buy a wooden flammables cabinet—won't it burn?**

**A:** Yes wood burns, but a cabinet constructed of one-inch plywood using specifications developed by both OSHA and NFPA (National Fire Protection Association) will meet all requirements for a flammables cabinet. The question is, how long will the wooden flammables cabinet protect the materials inside from the flame? The answer: Just as long, if not longer, than metal flammables cabinets.

**Q: Why would I buy a wooden acid cabinet—metal is stronger than wood?**

**A:** Corrosive vapors can rust the interior, shelf supports and hinges of a metal cabinet creating a potentially dangerous situation therefore limiting the working life of the cabinet. Alternatively, some SciMatCo cabinets produced over 20 years ago are still in service today. The SciMatCo corrosive cabinets are made entirely of wood which will not be affected by corrosive fumes and will provide long lasting benefits to the school.

**Q: Am I required to have an eyewash and shower in my laboratory and prep room—Can I just have one?**

**A:** Per OSHA 1910.151(c) and subsequently ANSI Z358.1 you need one in each *work area*. There can be no obstructions (stairs, ramps, doors, etc.) between the path of injury and safety equipment.

## SciMatCo Flammables Cabinets Offer Superior Protection in a Fire!



SEE THE VIDEO

[www.flinnsci.com/videos/burntest](http://www.flinnsci.com/videos/burntest)





# CHEMICAL STORAGE

## Flinn/SciMatCo® Wooden Cabinets— All Wood Construction Eliminates Corrosion and Guarantees Years of Safe Storage



### Stak-a-Cab Safety Storage Cabinets

- Customize a chemical storage center to meet your storage needs.
- Constructed of 1" thick, high density, 9-ply exterior grade plywood and finished with Super Chem-Tuff paint.
- All cabinets meet and exceed applicable NFPA and OSHA standards.

#### Fully Lined Acid Cabinet SE8051, \$1024.85



#### Acid Cabinet Features

- Unique and entirely wooden hinge assembly eliminates hinge deterioration and corrosion.
- Polypropylene lock assembly furnished with padlock and keys.
- Floor of each cabinet constructed as a liquid-tight 2" deep trough to contain spillage.



**Corrosive Cabinet**  
SE1460, \$668.20

**Combination Cabinet**  
SE2060, \$874.45

**Flammables Cabinet**  
SE1860, \$654.05

**Floor Stand**  
SE1861, \$106.70



**30-Gallon Floor Flammables Cabinet**  
SE7021, \$595.35



### Wooden Flammable Cabinets—Your Best Choice for Storage of Flammable Liquids

- All cabinet joints rabbeted for maximum strength and durability.
- Wooden flammables cabinets do not distort or bend when involved in a fire.
- These cabinets are constructed as a thermal insulator and will not rust.

*For a full description of these cabinets and to see Flinn's complete line of safety storage cabinets, visit: [www.flinnsci.com](http://www.flinnsci.com).*



# LABORATORY SAFETY SUPPLIES AND EQUIPMENT

**Flinn Spill Control Center**  
AP6448, \$227.00



**Eye/Face Wash with Bowl and Wall Mounting Bracket**  
SE1010, \$354.00



**Safety Shield, 30" x 16"**  
SE225, \$317.90



**ABC Fire Extinguisher, 5 lb.**  
SE1034, \$72.55



**Goggle Sanitizer**  
SE1000, \$577.45



**Instructor Chemical Splash Goggles**  
AP8739, \$14.05

**Shower/Eyewash Combination**  
SE1025, \$1041.60



**Fire Blanket with Case**  
SE3006, \$117.65





# FUME HOODS

## Labconco Basic™ Fume Hoods

The Labconco Basic fume hood is simple in design yet will handle the most rigorous demands of your science laboratory.

- Solid, steel construction with chemical-resistant epoxy coating that resists corrosion from chemical fumes.
- Tempered ¾" thick safety glass sash protects the user.
- Vaporproof incandescent light illuminates the interior work area.
- UL-approved
- Removable motor blower mounts on top of the hood or at a remote roof location.
- Two sizes of fume hoods available.
- Units are ETL listed



### Labconco Basic™ Fume Hoods

Catalog No.	Description	Price/Each
SE1900	Exterior Dimensions: 47"W x 25"D x 48"H† Fume Hood Size: 4 foot	\$5511.25*
SE1901	Exterior Dimensions: 70"W x 25"D x 48"H† Fume Hood Size: 6 foot	7282.65*

†Height dimension is without blower.

### Base Cabinets for Labconco Fume Hoods

Made of solid wooden construction with a chemical resistant Trespa work surface, hinged doors and an adjustable shelf.

Catalog No.	Description	Price/Each
SE1906	Exterior Dimensions: 47"W x 30"D x 36"H Fume Hood Size: 4 foot	\$1115.25*
SE1907	Exterior Dimensions: 70"W x 30"D x 36"H Fume Hood Size: 6 foot	1924.55*

\* Must be shipped by motor truck freight.

Air and vacuum service fixture kits are available upon request.

### We Can Help You Find the Right Fume Hood

Our product management team will gladly assist you in selecting the right unit for your laboratory. Flinn Scientific is also a full-line dealer for Labconco which provides us with a variety of options. Contact us today to discuss your needs.

**1-800-452-1261**

## A Quality Fume Hood You Can Afford From Flinn

A fume hood is a basic safety aid. It should capture, dilute and exhaust hazardous and noxious fumes. The Flinn fume hood has been designed to meet the requirements of a senior or middle school laboratory.

- Corrosion-resistant wooden construction coated with chemical resistant water-based epoxy paint.
- ¼" shatterproof, polycarbonate sash that can be moved to five positions.
- UL approved vapor-proof light to illuminate the interior.
- Blower set and electrical outlet are standard.



Flinn Fume Hood, 36"  
SE8000  
(Shown wit Optional  
Base Cabinet)

### Flinn Fume Hood Specifications

Catalog No.	Description	Price/Each
SE8000	<b>Flinn Fume Hood, 36"</b> Includes motor blower set, vaporproof light and adjustable sash. Exterior Dimensions: 38½"W x 23¼"D x 48"H Blower Specifications: 115 Volt, 60 cycle, 930 CFM @ .25 static pressure	\$1188.05*
SE9000	<b>Flinn Fume Hood, 48"</b> Includes motor blower set, vaporproof light and adjustable sash. Exterior Dimensions: 48¾"W x 23¼"D x 48"H Blower Specifications: 115 Volt, 60 cycle, 1400 CFM @ .25 static pressure	1695.55*

### Flinn Base Cabinets for Fume Hoods

Catalog No.	Description	Price/Each
SE8003	<b>Base Cabinet for 36" Flinn Fume Hood</b> Includes Trespa® work surface, hinged doors and one adjustable shelf. Exterior Dimensions: 38½"W x 23¾"D x 36½"H	\$ 853.10*
SE8004	<b>Base Cabinet for 36" Flinn Fume Hood With Cupsink</b> Includes Trespa® work surface, hinged doors and one adjustable shelf. Exterior Dimensions: 38½"W x 23¾"D x 36½"H	966.00*
SE9003	<b>Base Cabinet for 48" Flinn Fume Hood</b> Includes Trespa® work surface, hinged doors and one adjustable shelf. Exterior Dimensions: 49"W x 23¾"D x 36½"H	1012.75*
SE9004	<b>Base Cabinet for 48" Flinn Fume Hood With Cupsink</b> Includes Trespa® work surface, hinged doors and one adjustable shelf. Exterior Dimensions: 49"W x 23¾"D x 36½"H	1126.65*

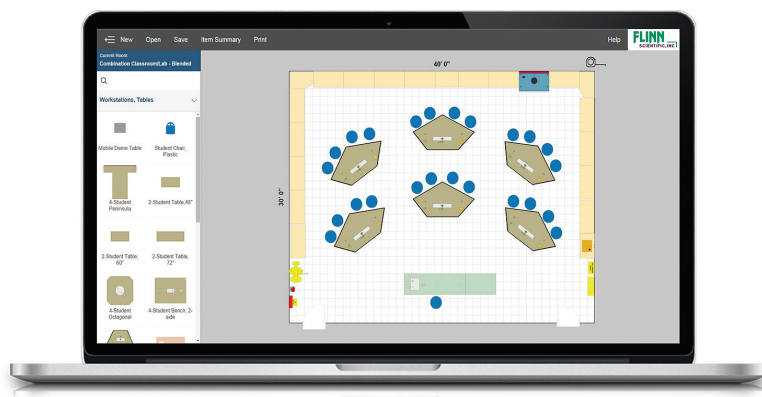
\* Must be shipped by motor truck freight.



# FLINN LAB DESIGN SERVICES

Flinn's free online UDesign™ Science Facilities Layout Planner is a great way to get your ideas down on paper! UDesign™ enables you to design a customized floor plan that you can easily modify, share, save and print.

Select from popular pre-planned layouts or use your own room dimensions. Choose from a library of furniture and equipment icons that you can drag and drop into your on-screen layout. The convenient "Item Summary" feature provides a list of the furniture and equipment that you have added to your layout and includes cost information.



## With UDesign™ you can:

- Compare a variety of lab designs and options.
- Create a customized learning environment.
- Communicate your ideas to administrators.

Flinn's experienced lab design experts can review your plan, offer design suggestions, provide a free safety review and answer all your questions about lab design. We are here to help!

## Free Lab Design Consultation

Allow the experienced lab design team at Flinn Scientific to help you get the new laboratory of your dreams!

Our lab design specialists will work with you, your administrator and your contractor/architect to assist with all aspects of the lab design process. Flinn can be your one source for furniture, safety equipment, chemical storage and lab equipment.

With 40 years of experience, Flinn is committed to providing schools with a new lab solution that will not break the budget. Let the team at Flinn handle your lab design needs so you can do what you love most...teaching your students.

Contact Flinn and ask to speak to a Lab Design specialist today!

**1-800-452-1261**

**Email: [labdesign@flinnsci.com](mailto:labdesign@flinnsci.com)**

